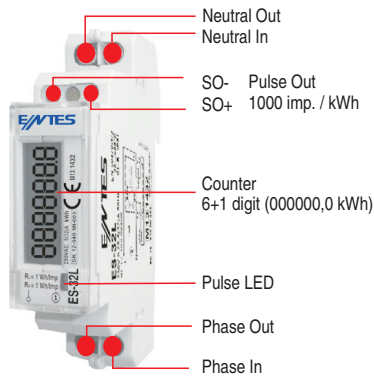
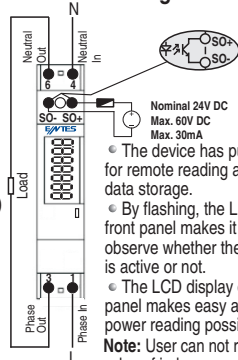


### Front Panel



### Connection Diagram



• The device has pulse outputs for remote reading and central data storage.

• By flashing, the LED on the front panel makes it possible to observe whether the measuring is active or not.

• The LCD display on the front panel makes easy and accurate power reading possible.

**Note:** User can not reset index. If the value of index exceed 999999,9, it is resetted automatically and continue to count.

### Watt-Hour Meter with LCD

In today's world, Efficient Power Management is very important for low-cost. Measuring process must have been fulfilled with certain accuracy for precise analysing and measuring the energy. ES-32L measures the active watt hour consumption directly and error free in single phase systems and it shows the total watt hour consumption. The most important features of the device are its reliability, small size, light weight, modern design, and easy installation.

### CAUTIONS

1. Connect the ES-32L's terminals as shown in connection diagram.
2. ES-32L does not require any periodical maintenance.
3. Installing, repairing and operation should be performed by authorized person.
4. Do not open the device. It does not include any parts that can be handled by users.
5. Do not use the device out of its purpose.
6. Before operating your device, make sure that all connections are made properly.
7. Please contact your dealer for any type of service required.
8. Entes A.Ş. will not be responsible,
  - if your device fails because of improper installation.
  - if your device fails because of natural disasters (fire, lighting, etc.).
  - if your device fails because of liquid penetration into the device or contact to any liquid for any reason.
  - if the device or its software is interfered for any purposes.
  - if the serial number on the device is damaged.
  - if the device is out of order because of improper and careless use.
  - if the device is out of order defected during transportation out of Entes's responsibility.

Some applications of ES-32L are:

- Factories
- Shopping Malls
- Airports
- Railway Stations
- Stores
- Building Complexes
- Hotels
- Hospitals
- Schools
- Holiday Villages
- Marinas
- Industrial Exhibition Halls.

### Technical Specifications

Operating Voltage (Un)	: Please look at labels on the device.
Operating Frequency	: 50/60 Hz.
Rated Current (In)	: 5 A (maximum 32 A)
Current Range ( I )	: 0.02-32A
Accuracy	: Class 1
Power Consumption	: < 2 VA
Display	: 6+1 digit = 999999,9 kWh
Data retention duration	: > 40 year
Pulse LED	: When the current is more than 0.02A it blinks proportional to the consumed energy.
Pulse Out	: 1000 Pulse / kWh
Out Feature	: Optical isolated NPN transistor
Pulse out width	: 20 mS.
Operating Temperature	: -25 °C.... +55 °C Class:B
Box Protection	: IP51
Cable Section	: 4 mm <sup>2</sup>
EMC / Pollution Stability	: <ul style="list-style-type: none"> <li>Surge Voltage Test : 4 kV 1.2 / 50 µs. (IEC 1000-4-5)</li> <li>Burst Test : 4 kV (IEC 1000-4-4)</li> </ul>
Installation	: Standart DIN mount (DIN EN60715)
Weight	: 60 gr. (excluding the packet)

It is compatible with EN62053-21 standart and EN50470-1/3 standarts. It has to be used indoor

### Dimensions:

